

Menominee's Journey to a Culture of Health

Jerry Waukau & Wendell Waukau
of the Menominee Nation WI

Presentation-WTCS Common Ground Conference

October 17, 2019, Appleton WI

Menominee Nation

- ❑ Wisconsin's oldest continuous residents
- ❑ Only WI Tribe inhabiting ancestral lands
- ❑ Treaties reduced Tribal lands from 10 million acres to the current 235,523 acres
- ❑ Maintains the country's largest sustainable forest
- ❑ 9,000 Tribal members, 4000 residing on the reservation
- ❑ Tribal members have shown tremendous resilience
- ❑ Ranked 72 out of 72 WI counties in Public Health Outcomes



Menominee Indian School District (MISD)

- ❑ Established in 1976
- ❑ About 1000 students attending 4 schools
- ❑ 92 % American Indian (AI)
- ❑ 83 % Free & reduced



Menominee Indian School District (MISD)

- ❑ 31% Have an IEP
- ❑ 16% Chronic Absenteeism Rate
- ❑ 2-3 Schools not meeting expectations on State Report Card
- ❑ "drop-out factory" (2007 Johns Hopkins)



The Perfect Storm...



What is Bridges Out of Poverty?

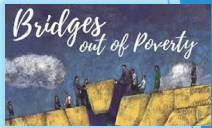
- ❑ Framework that helps employers, community agencies & individuals address & reduce poverty in a comprehensive way. (ahaProcess.com)
- ❑ The Bridges approach is about economic diversity, not racial or cultural diversity. (ahaProcess.com)
- ❑ For Menominee Nation-Community engagement (CE) initiative intended to be a catalyst for building positive relationships among stakeholders.
- ❑ Relationships are the key drivers to hope, healing, and resilience.

Bridges out of Poverty

- How did "Bridges" originate at MISD/community?

Was part of comprehensive school reform effort brought in by MISD back in 2005 to address its academic barriers/challenges. (i.e. truancy, suspensions, literacy, graduation rates . . .)

Others: poverty, teenage pregnancy, alcohol & drugs, crime & violence.



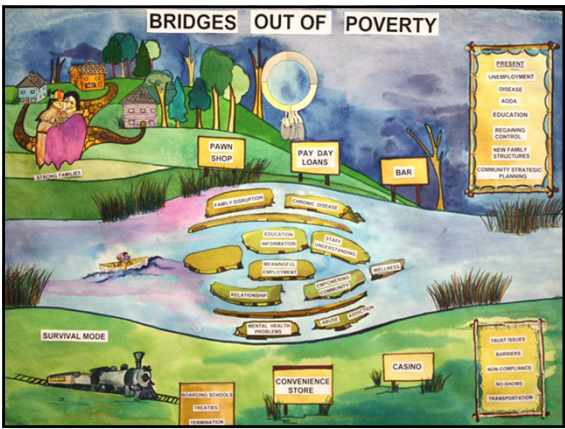
Opportunity

- Adopt a school & community reform effort that address these barriers/challenges.
- One that is comprehensive/systematic (addressing root causes not symptoms).
- Engages families, communities and schools to work as partners (i.e. school-community collaboration, community engagement models, community schools).
- In 2005 MISD/Menominee Tribe adopted Bridges out Poverty

Bridges Out of Poverty Mental Model

- Traditional Setting
- Survival Mode
- The Circle Surrounds and Supports
- Future Mission - Community Wellness






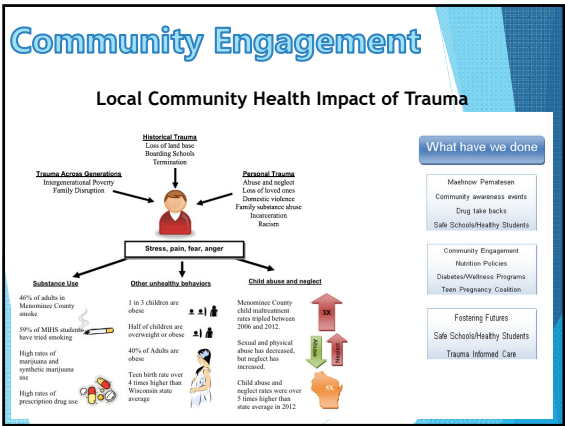




Hilary "Sparky" Waukau

"The further back we go on the chain of events that leads to a problem, the stronger the healing can be."





Community Engagement

Definition? There is no widely accepted definition

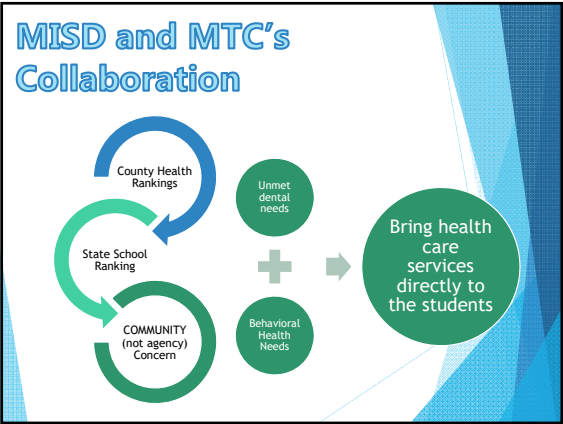
- CDC (2011) defines it as” the process of working collaboratively with groups of people who are affiliated by geographic proximity, special interests, or similar situations with respect to issues affecting their well-being.
- Coalition of Community Schools- “two-way street where the school, family, and community work together creating networks of shared responsibility.”
www.communityschools.org

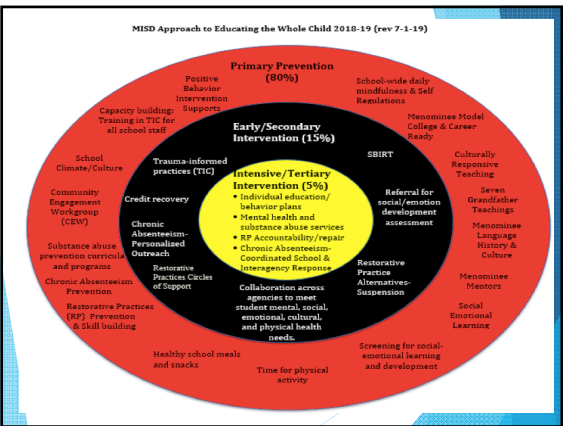
Community Engagement

- Here's the one we prefer that came from a Menominee Combat Veteran/Elder in 2009 while attending a Summit on Historical Trauma:

“Connect the dots.”

Community Engagement





Results and Validations

- 2014 Menominee's trauma efforts were presented during a U.S. Senate Committee on Indian Affairs by Dan Press Columbia University Professor & Attorney
- Behavioral health visits at MTC have increased.
- 2014 UW Madison Community-University Partnership Award

Wisconsin Partnership Program
UNIVERSITY OF WISCONSIN
SCHOOL OF MEDICINE AND PUBLIC HEALTH

Results and Validations cont...

- 2015 Robert Wood Johnson Foundation Culture of Health Prize Winner

<https://www.rwjf.org/en/library/articles-and-news/2015/10/coh-prize-menominee-wi.html>

- 2015 APHA Case Study

<https://mail.google.com/mail/u/0/#search/harnessing+the+power+of+cross+sector+collaboration/14c13e8614277d62?projector=1&messagePartId=0.1>



Results and Validations cont...

- 2016 Senator Heitkamp (ND)

<https://mail.google.com/mail/u/0/#search/senator+heitkamp/15366a1c21f3ebf7>

- 2017 Confronting ACES to Improve Rural Kids' Lifelong Health

<https://www.ruralhealthinfo.org/rural-monitor/adverse-childhood-experiences/>

- 2017 John Gallagher Congressional Resolution H. Res 443

<http://docs.house.gov/billsthisweek/20180226/HRES443-2.pdf>



Results and Validations cont...

- Since 2008, high school graduation rates have increased from 60% to 90% (WI DPI)

- 2012 MISD Superintendent recognized as a White House "Champion of Change"

<https://obamawhitehouse.archives.gov/blog/2012/08/21/providing-services-success>



Results and Validations cont...

- ❑ School suspension rates have dropped. 6.9% compared to 8.2 for State of WI (2017-18)
- ❑ 2019 WPT Documentary Not Enough Apologies: Trauma Stories "Prospect of Hope"
<https://www.pbs.org/video/not-enough-apologies-8bdjrb/>

SCHOOL-TO-PRISON PIPELINE

Wisconsin Public Television

Lessons Learned from Journey?

- ❑ Define the **current reality** in your nation. (good-bad-ugly)
- ❑ Find and invite the **leadership**
- ❑ Tackle the "elephant in the room"
- ❑ Develop "Champions" within your organization
- ❑ Build & tell your story
- ❑ Sustain the journey through collaborative partnerships
- ❑ **Validate** the successes and keep going

LESSONS LEARNED

RWJF Culture of Health Prize (2015)

MENOMINEE NATION WI

**Maec Waewaenen for
allowing us to share our
story with you...**

Contact Info:

- Jerry Waukau-Health Administrator
Menominee Tribal Clinic
jerryw@mtclinic.net
- Wendell Waukau-Superintendent
Menominee Indian School District
wwaukau@msd.k12.wi.us

